

2009 Non-Stop JUNIOR Carriage Upgrade Instructions

To convert old JUNIOR to the new 2009 **Standard-Duty** carriage in the field involves 2 steps. The first is to remove the safety catch from your old carriage and install it on the new carriage. The second is to re-rig half the winches to the opposite hand.

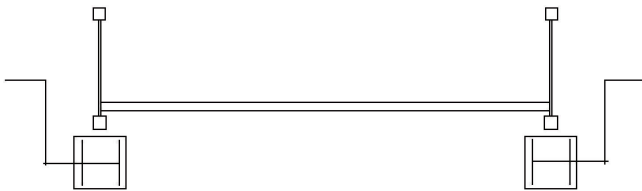
On the old JUNIOR, all the winches were rigged the same, they would be right-hand on the new **Standard-Duty**. When we moved the winch back to the laborers' side it became necessary to have left-hand and right-hand winches like our HEAVY-Duty scaffold.

Right now all your winches are rigged right-hand. These instructions will show you how to rig half of them as left-hand.

1. Remove your old carriages and install the new ones. Some of the carriages have red marks. These go on the left-hand sides. When you brace two legs together and put them at the wall, the red carriages will be on your left as you face the wall.

2. Remove your safety catches from the old carriages and install them on the new ones. Use the same pin and cotter pin. If you are missing any safety catches, contact Non-Stop immediately at 800-845-0845.

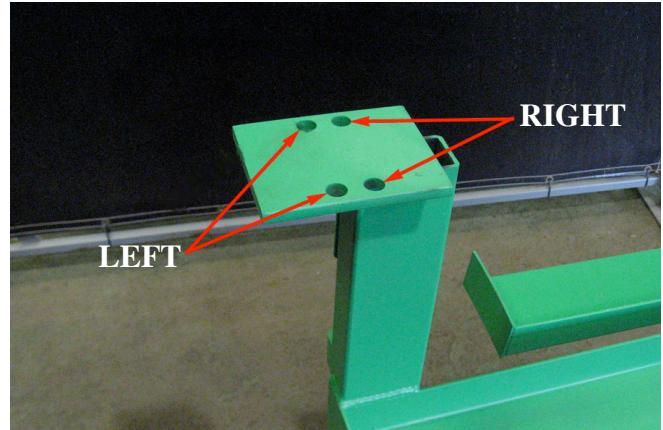
3. Remove your winches from the old carriages and install them on the new ones. The handles will always go on the outside of the tower. That way they won't hit the x-braces as you crank.



If any questions arise, or you don't understand these instructions, call Non-Stop at 1-800-845-0845.

Non-Stop Scaffolding, Inc.
1314 Hoadley St.
Shreveport, LA 71104

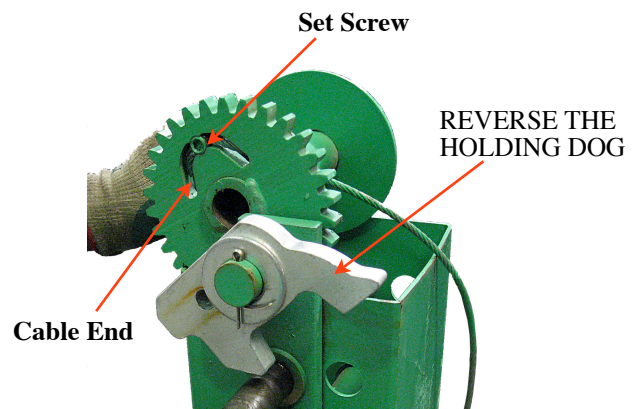
4. There are four holes in the winch plate. Use the holes closest to the tower for right-hand winches, and the holes farthest from the tower for left-hand winches.



The new mounting plate is thicker and drilled more precisely than the old one. **USE ONLY THE LOCK WASHER PROVIDED. DO NOT USE FLAT WASHERS BETWEEN THE NUT AND THE MOUNTING PLATE.**

The following instructions apply **ONLY** to winches you bolted to **LEFT-HAND** carriages - the ones with the red markings. **DO NOT CHANGE ANY RIGHT-HAND WINCHES!**

5. The cable must be removed from the drum and re-attached so it wraps around the drum in the opposite direction. First, using a 1/4 Allen wrench, remove the set screw holding the cable. It may pop out and get lost. There are spares in the parts bag. Re-thread the cable exactly as shown and

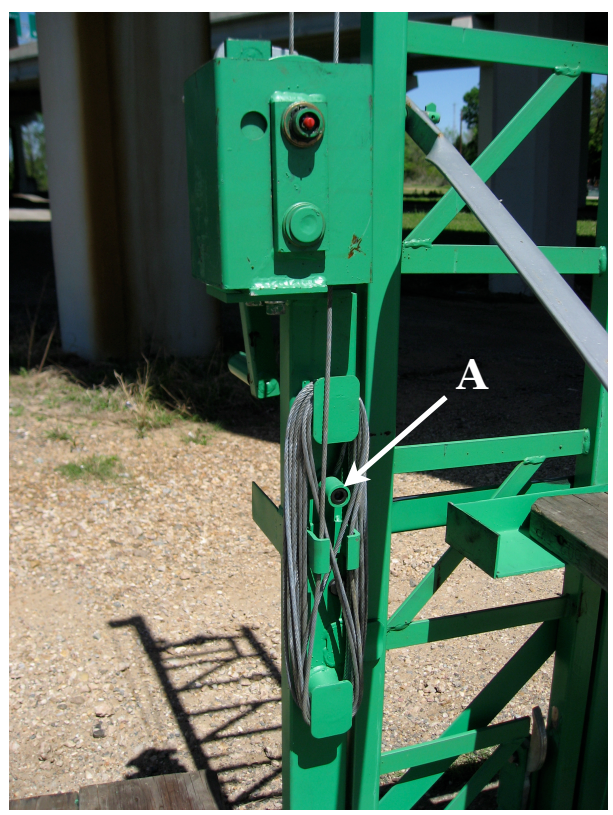


*Properly Rigged Left-Hand Winch
Before The Dog is Reversed*

tighten the set screw. Sometimes you can accomplish this without taking the drum out of the winch. If not, use snap ring pliers with .070 or smaller tips to remove the snap ring and slide out the drum shaft. When you re-assemble it, make sure it's clean and shoot a few squirts of grease in the fitting on the end of the shaft.

6. REMOVE AND REVERSE THE HOLDING DOG.

7. Remove the cable from the wind-off reel. Run the end of the cable through the winch body and attach it to the cable clamp A.



Wrap the surplus cable around the spools like shown. IMPORTANT: Make 4 wraps clockwise, then cross over and make 4 wraps counter-clockwise. This keeps the cable from getting twisted.

Continue until all the extra cable is wrapped up. Run the last 2 wraps through the keeper between the spools. It will keep extra cable from springing off the spools when there is no tension.

ALWAYS START WORKING WITH 4 WRAPS ON THE WINCH DRUM.

If any questions arise, or you don't understand these instructions, call Non-Stop at 1-800-845-0845.
Non-Stop Scaffolding, Inc.
1314 Hoadley St.
Shreveport, LA 71104