

# Non-Stop Hoist Trap-Door Assembly and Use Instructions

Draft 2-16-12



**WARNING:** This sheet contains important safety information which must be read, understood, and followed by ALL workers on the scaffold. Failure to do so could cause serious injury or death.



**WARNING:** Non-Stop Scaffolding does not manufacture the hoist. Follow the hoist manufacturer's instructions for proper hoist operation. Failure to do so could cause serious injury or death.



**WARNING:** DO NOT use the hoist, and/or materials being lifted, to open the trapdoor. Materials could snag on the doors and cause the trapdoor unit to be dislodged, resulting in an unsafe condition.

## IMPORTANT:

Read these instructions all the way through before assembling, using, or dismantling the Hoist Trap-door and Hoist Receiver. **Follow them in order.** If there is anything you don't understand, call 800-845-0845 for assistance.

### 1. Install the Hoist Trap-Door System.

Using your forklift, place the trap-door unit in a **braced bay**. It must NOT be installed in an open, unbraced bay. The unit must be tipped down (tilt your forks down) as you slide the unit in place in order to lock it under part of the elevating brackets.

### 2. Install the Overhead Protection Components.

They consist of a tall guardrail post, overhead beam, and a pusher to support the wall side of the beam. They are very easy to install. The exact instructions are in the main manual. See Photo 1.

### 3. Attach the Betamax hoist to the receiver.

Use the three attaching pins supplied with the Hoist Receiver, or use 1/2" Grade 5 bolts. Because of the spacing of the holes, the hoist can only be installed one way. See Photo 2.

### 4. Install the Hoist Receiver.

Using your forklift, place the hoist receiver on top of the Overhead Protection System. Center it front to back. Bolt it in place by drilling through the existing holes in the mounting plates with a 7/16 drill, and securing it with 3/8 x 4 bolts. See Photo 3.

### 5. Install End Guardrails.

When the trap-door is open, end guardrails that block access to the opening must be in place. Install them in the sockets provided on the trap-door unit. Use the rope provided to open and close the doors.

### 6. Cleat Planks

Planks next to the trap-door unit must be cleated to prevent them from sliding. Fasten a 2x4 block (or equivalent) to the underside of the end of the planks.

### 6. Tie the Scaffold to the Wall

The tower holding the trap-door **MUST** be tied to the wall or building structure **ABOVE** the work platform. If there is no wall or structure, tie every 10 feet vertically **under** the work platform.



Overhead Beams

Overhead Pushers

Tall Guardrail Posts

Photo 1

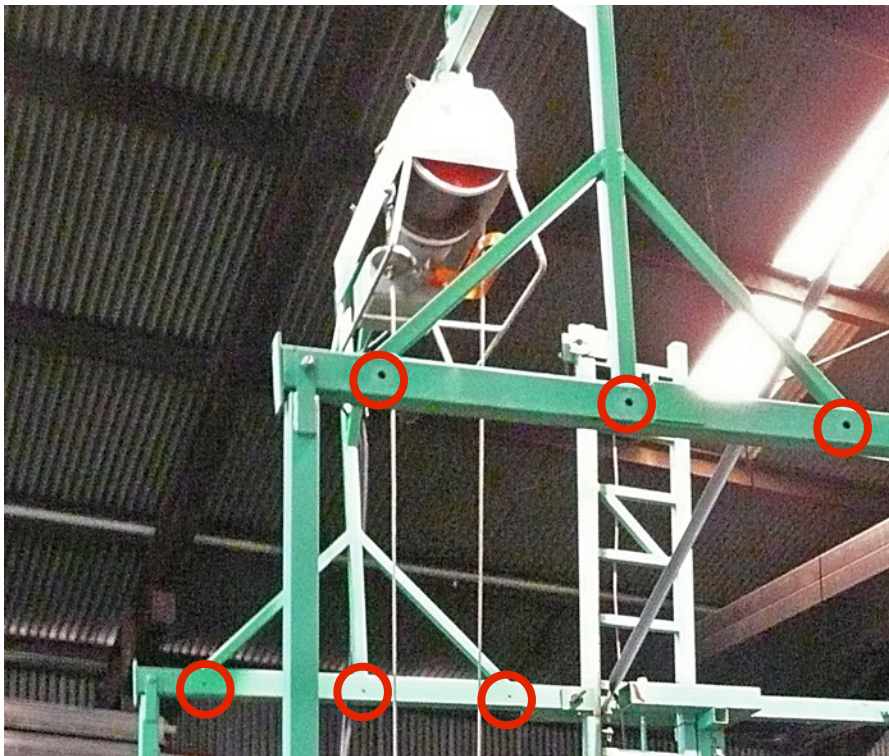


**WARNING:** The tower holding the trap-door must be tied to the wall **ABOVE** the work platform (see item 6) with tension ties. Refer to the Heavy-Duty Manual for tension ties.



**Photo 2**

Hoist installed on Hoist Receiver.  
Due to the spacing of the mounting  
holes, the hoist will only fit one way.



**Photo 3**

○ Hoist Receiver to Overhead Beam  
bolt hole locations.