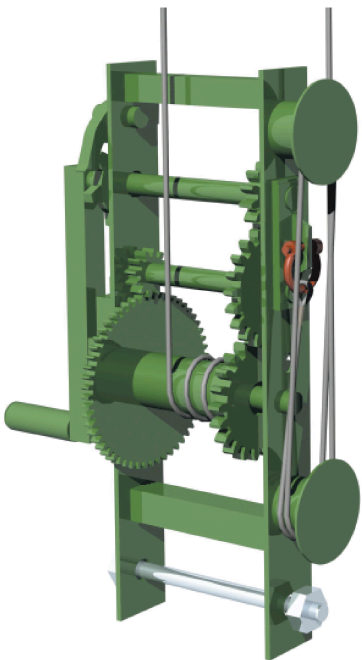
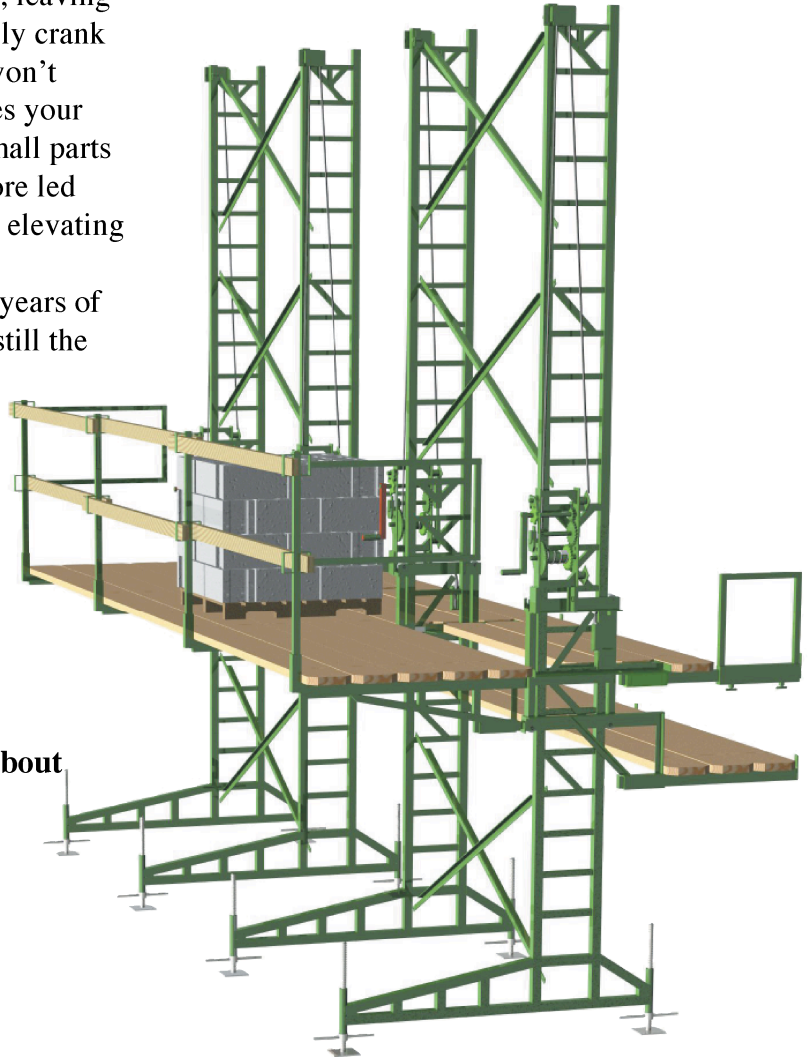


Non-Stop HEAVY-DUTY - The Gold Standard Since 1976

— In 1976, Heavy-Duty introduced such radical features as starting on the ground to eliminate moving your men at scaffold-high, leaving the x-braces in place, a powerful winch that can actually crank the scaffold with a full load of materials, towers that won't sway or fold up and collapse, and simplicity that makes your men actually *want* to use it. We designed out all the small parts and backed it with a lifetime warranty. All that and more led contractors to make Non-Stop the industry standard in elevating scaffolding.

The Heavy-Duty you see today is the result of years of constant innovation, refinement, and fine-tuning. It is still the only elevating scaffold to give you all these money-saving advantages:

- **The strongest winch on the market - twice as strong as anyone else's.**
- **The strongest towers - guaranteed to never bend.**
- **Rack Brackets to quickly bundle your towers and get them moved to the next job without lost parts. They save *days* over clunky bunk racks.**
- **The most working room.**
- **Quickly adaptable to pilasters, end returns, just about any special situation you may encounter.**



The Strongest Winch Available

— The winch is the heart of any elevating scaffold system. One breakdown can cost you thousands. It must be easy to crank, because if it's not, your laborers won't, and your bricklayers will be back to bending and stooping. And then you may as well be back on frames. In other words, it's got to be the best.

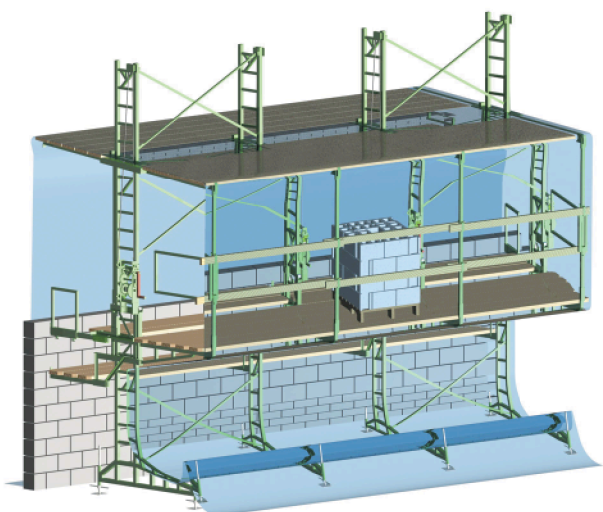
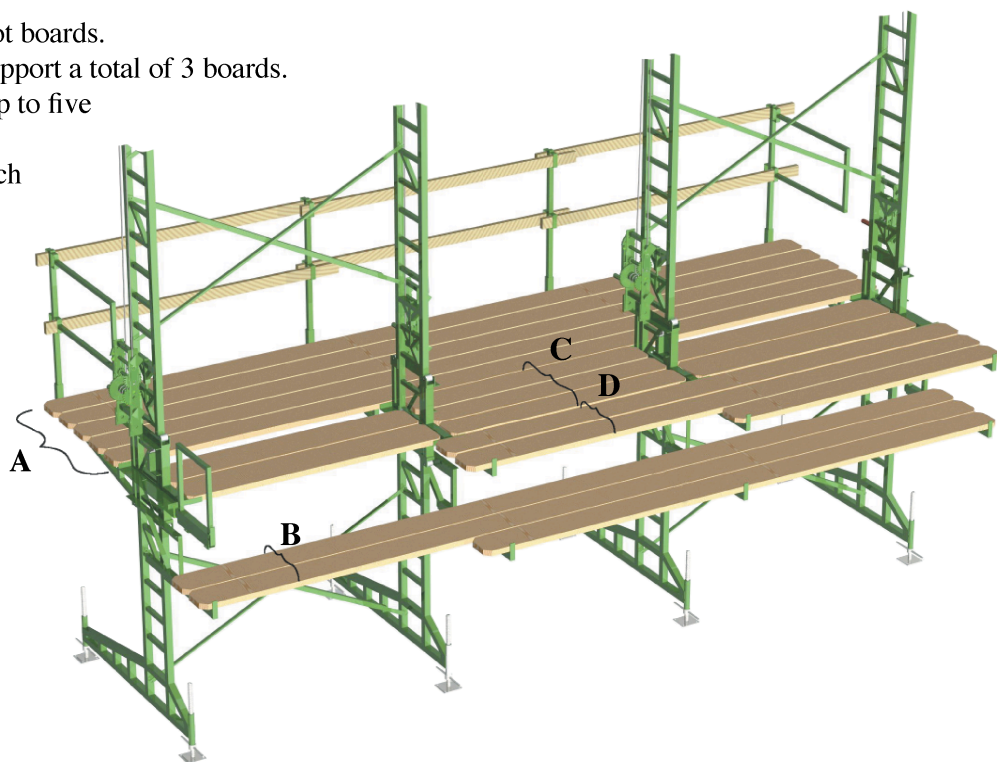
Heavy-Duty uses our two-speed winch that is twice as powerful as anything on the market. Many have tried, but no one has yet to duplicate the power, quality, and safety you get in the Heavy-Duty winch. It's so easy to crank, two laborers can raise 105 feet of scaffold 16" in under 4 minutes.

- Absolutely cannot backlash and free-spin as others do.
- When you top out, shift to high gear to lower your scaffold in record time.
- Wear parts are case-hardened, and special gear geometry makes it impervious to debris.
- If it ever breaks, we fix it free. Including freight. Period.

Several Planking Options For Any Type Job

- A. Laborers' platform supports five 16-foot boards.
- B. Masons' pullouts can be extended to support a total of 3 boards. Longer pullouts are available to support up to five boards.
- C. Three boards form a standard workbench in the open bays.
- D. Additional boards can be added to extend the workbench or hop-boards.

Pilaster Brackets, Inside Corner Brackets, Inside Corner Return Brackets, and other accessories are available for special situations.

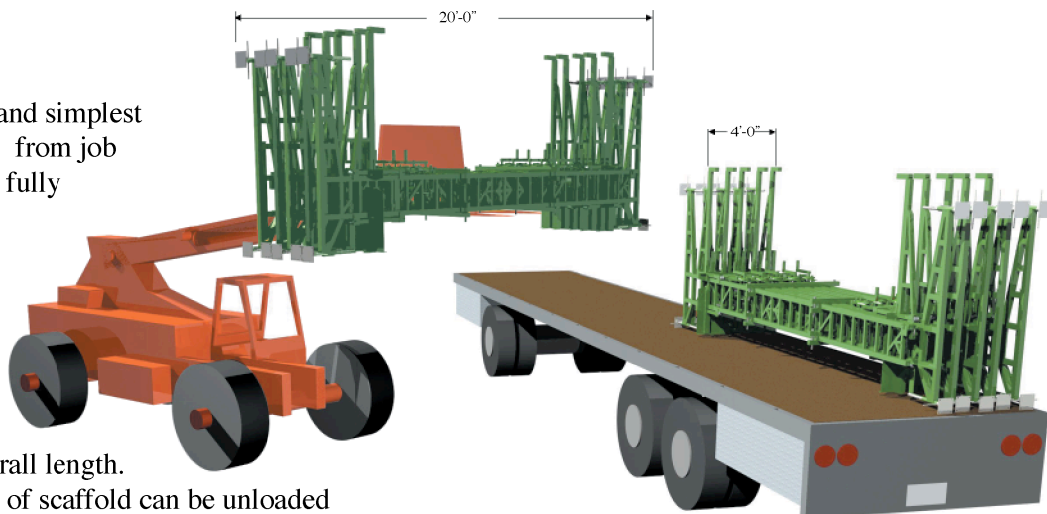


Winter Protection

— The Non-Stop Overhead Protection System can be used to provide a winter enclosure. We developed this 3-piece system over the course of 4 years with the guidance of many of our northern customers to provide the most versatile “skeleton” for attachment of a roof and polyethylene. The overhead beam telescopes to extend up to 10” past the face of the wall. The system attaches securely to the elevating carriage, and x-braces need not be removed and replaced. All parts are captured, and the beam does not have to be threaded on from the top. Installation is a breeze! Plus, all components serve both right and left-hand elevating carriages.

Rack Brackets

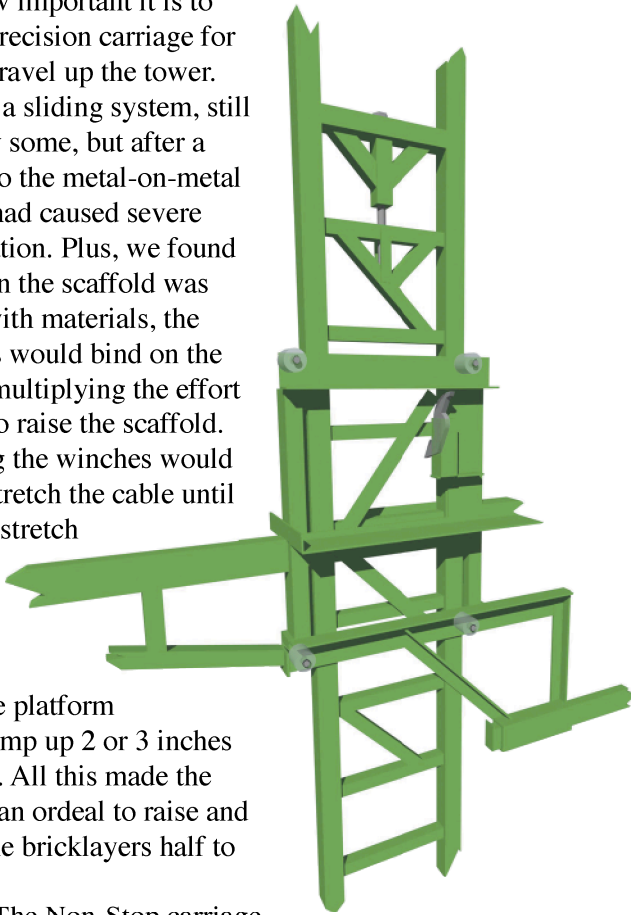
— Rack brackets are the fastest and simplest way to move Heavy-Duty scaffolding from job to job. Rack brackets secure up to 10 fully assembled towers in a rigid 48”-wide bundle. Using rack brackets, up to 20 assembled towers can be hauled side-by-side on any standard 8’-wide trailer. This diagram shows how 10 towers, 18’ tall form a bundle only 20’ in length. Towers assembled 27’ tall form a bundle less than 30’ in overall length. Using rack brackets, 133 running feet of scaffold can be unloaded from a trailer in under 3 minutes, putting you on the wall faster.



Elevating Carriages

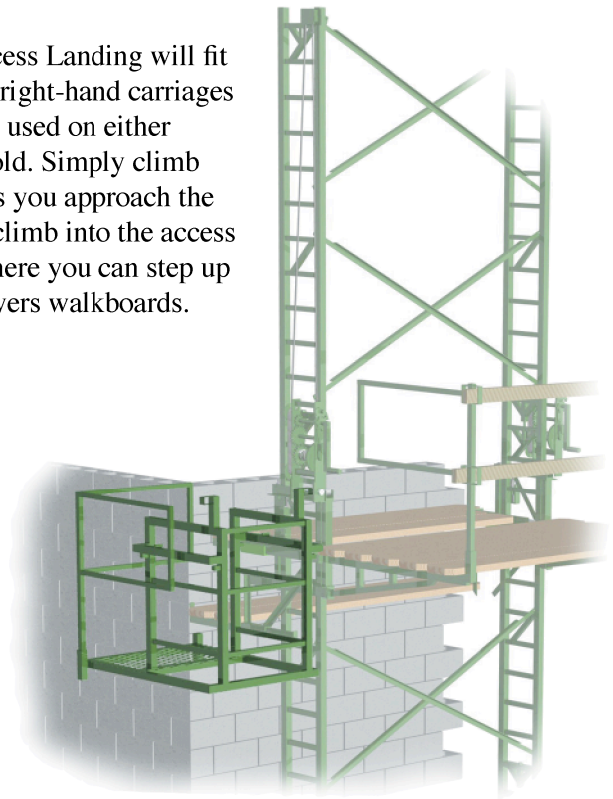
Our early research with other systems proved to us how important it is to build a precision carriage for smooth travel up the tower. We tried a sliding system, still in use by some, but after a year or so the metal-on-metal friction had caused severe deterioration. Plus, we found that when the scaffold was loaded with materials, the carriages would bind on the towers, multiplying the effort needed to raise the scaffold. Cranking the winches would simply stretch the cable until it would stretch no more and then the entire platform would jump up 2 or 3 inches at a time. All this made the scaffold an ordeal to raise and scared the bricklayers half to death.

The Non-Stop carriage uses 4 hardened aluminum rollers on stainless steel shafts to allow the work platform to roll smoothly up the tower. Time has proven this system to be unaffected by weather and debris. The rollers never seize or deform the towers.



Access

The Access Landing will fit on either left- or right-hand carriages allowing it to be used on either end of the scaffold. Simply climb the tower, and as you approach the work platform, climb into the access landing. From there you can step up onto the bricklayers walkboards.



Constant Safety Protection

The **Safety Catch** is a completely automatic, inertial safety device that does not rely on springs or gravity. It is unaffected by mortar, debris, etc. and it cannot be bypassed. Since it is completely passive, your men never have to remember to disengage it or reset it. They will always be protected when both raising *and* lowering the scaffold.

"Production and safety are the two words that describe Non-Stop best. We plank one level, put in the toe boards, and OSHA leaves us alone."
Gerald Plaisted; Stretar Masonry; Duluth MN

"It paid for itself in the first 3 months. Since Non-Stop starts on the ground, we make money on walls only 14 feet high. I can't believe how quick it goes up, even 90 feet high...we couldn't be happier."
Vince Grasso; Grasso Masonry; Grand Junction, CO.

"It's the fastest adjustable scaffolding to erect that I have ever seen. I think Non-Stop is a must in order to stay competitive...the masons work a lot faster on it."
Lennie Pardue; L. C. Pardue, Inc.; Portland, OR

"I have close to 5,000 conventional frames on my yard and I hope they stay there. The money is made on the Non-Stop — that's why I have well over 300 towers. Tell anyone that asks, if you want to increase production, improve quality, make more money, and get OSHA off your back for good, get Non-Stop."
John Sabia; D. M. Sabia & Co.; Conshohocken, PA.

"...you build it on the ground completely and set it up with your forklift or crane and you're done, with no safety belts. And it's simple, anybody can pick up on it in one day. Non-Stop works just beautifully and our bricklayers love it."
Dan Macario; Genco, Inc.; Bethesda, MD

"Non-Stop is so profitable we use it on any wall, on any job we can. It doesn't matter if it's straight walls or cut up, no matter the size of the project. You can blow and go and you don't have to worry about breakdowns."
Jimmy Alvey; Skinner Masonry; Dallas, TX

"...we move 27' towers from job to job in no time, all we do is take out the braces. We've worked Non-Stop from 20 feet high to 110 feet high...the stability is amazing."
Jerry Foley; Foley Tile; Tucson, AZ

"We've been using Non-Stop for nearly twenty years and we'll use it tomorrow... you just can't tear it up. It's paid for itself many times over."
Bill Dentinger; Bill Dentinger, Inc.; Milwaukee, WI

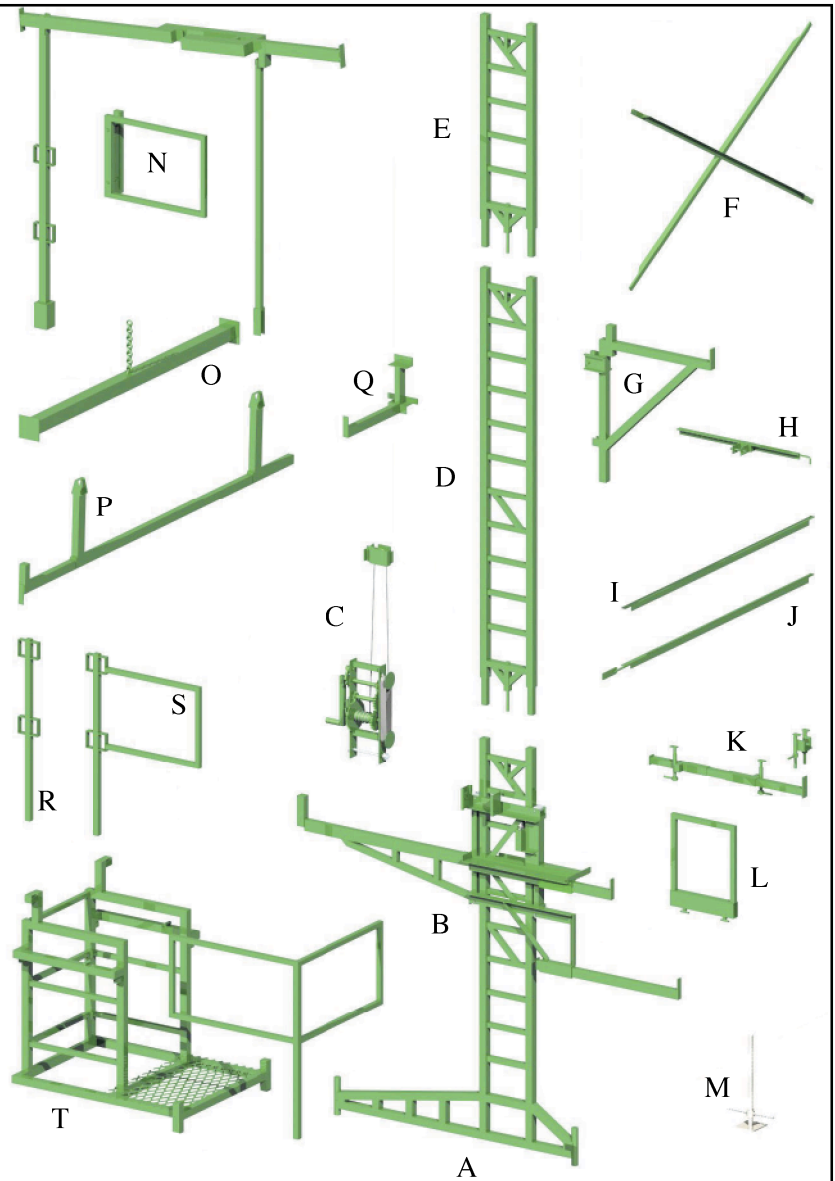
"Non-Stop was the first thing I bought when I got into the commercial market. In one day, eight bricklayers laid 2200 twelve-inch concrete block. And that includes bond beams, rebar, and grouting on four-foot centers. Non-Stop allows us to do more work, and better quality work, and make more money, too."
Gary Schweickert; Schweickert Masonry, La Salle-Peru, IL.

"We use it every place we can. We can take 133' off the trailer and be working by lunch time. It's super for block work, you can really pile the blocks in. We save an hour a day, just in raising boards."
Pierce Bruckner; Bruckner Masonry; Forsyth, IL

HEAVY-DUTY Component Diagram and Parts Spec List (Five-Board Version)

For price quotes or questions, call 800-845-0845

A. 9' Base Tower	91 lbs.
B. Elevating Carriage	119 lbs.
C. Winch and Pulley Assembly	66 lbs.
D. 9' Tower Extension	70 lbs.
E. 4'-6" Tower Extension.....	31 lbs.
F. X-Brace	16.5 lbs.
G. Carpenters' Bracket.....	28 lbs.
H. Wall Tie-In Bracket	10 lbs.
I. Straight Brace	13 lbs.
J. Adjustable Straight Brace	13 lbs.
K. Pilaster Plank Arm and Clamp.....	23 lbs.
L. Masons' End Guardrail Panel.....	22 lbs.
M. Leveling Jack	13 lbs.
N. Overhead Protection	98 lbs.
O. Forklift Bar.....	40 lbs.
P. Inside Corner Return	46 lbs.
Q. Inside Corner Bracket	13 lbs.
R. Guardrail Post.....	7 lbs.
S. Laborers' End Guardrail Panel.....	17 lbs.
T. Access Landing and Guardrail.....	117 lbs.



Best Warranty In The Business

Everything built by Non-Stop Scaffolding is guaranteed for life. If it breaks during normal use, we repair or replace it free, including freight. Period.

No one else stands behind their products the way Non-Stop does. Of course, no one else builds scaffolding the way Non-Stop does, either.

Rest assured that when you purchase Non-Stop Scaffolding, you're getting the finest elevating scaffolding on the planet. Guaranteed.

Non-Stop
SCAFFOLDING

1314 Hoadley Street, Shreveport, LA 71104 • (800) 845-0845 • FAX (318)222-0707

www.nonstopscaffolding.com